

Rick & Lanette HANSEN

Starts at 10 am MST
SATURDAY,
APRIL 22, 2023

**LUNCH
SERVED**

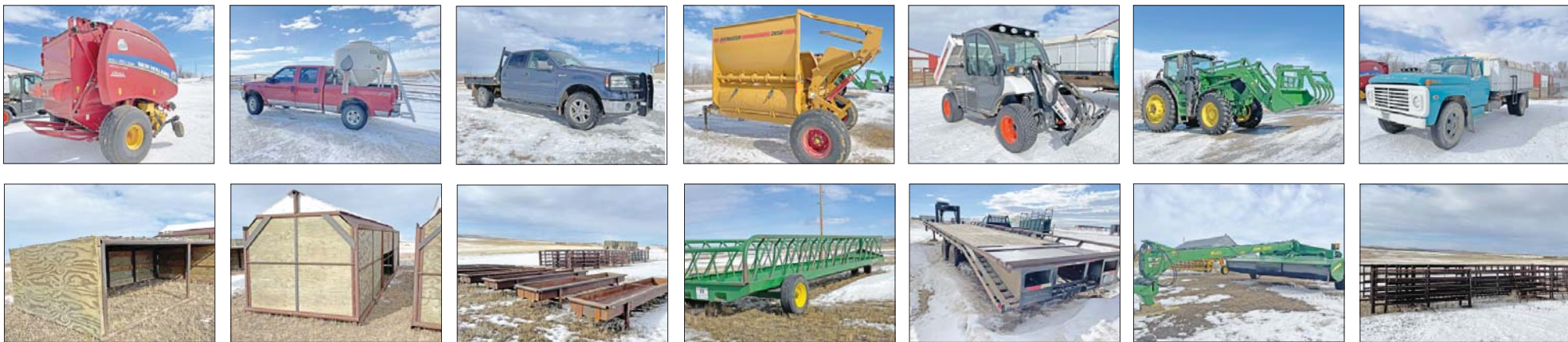
Rural Froid, MT

RETIREMENT AUCTION

From Froid, MT – East through Froid on Hwy 405 for 13 ½ miles (pavement will end after 9 miles), turn North at Hansen Registered Angus sign and go 2 miles.

From Grenora, ND – South on Cty Rd 5 to Wms Cty Rd 8, go West for 4 ½ miles; at fork in the road turn South and go 2 miles to “T” in the road, turn south and go 7 miles; turn North at Hansen Registered Angus sign and go 2 miles.

For Information: **Rick- 406-963-7239**



Livestock Equipment:

2016 JD 6175 MFWD tractor w/JD 380 loader, 8' bucket & grapple • 2015 NH 560 Round Baler- New belts, chains, drive roller in 2020, app. 11,500 bales • 2014 Hay buster 2650 Bale Processor, 1000 PTO • JD 956 MoCo mower conditioner • Vermeer R2300 rake • 2001 Ford F350 7.3 Diesel crew cab, 141,258 miles w/70 bu. Reimers Hopper bottom Grain feeder, 12 Volt mixing & discharge auger, scale & monitor • NH 357 Grinder Mixer, 540 PTO, shedded • 2- Chopped Hay feeders on wheels, 6'x24', home made • 2-Schoesse 30' Arrow front trailer style feeders • 4- Ranchers 250 bu. Creep feeders, fold down sides • 12-Bextra Round bale feeders • 20- Steel feed bunks, 16'x3' • Mineral feeders • Calf shelters • Calf cage w/ scale on wheels, 2" hitch • Hi-Qual 10' and 12' panels • 2-12 Hi-Qual frame gate • 2-2W 8' frame gates 1-2W 10' frame gate • Misc. gates • 30' wind break panels, 2 7/8" & 6" pipe, Insert sections, w/wind break boards, can hang gates on one end, gates to fit available • 20' 6 bar continuous panels • Windbreak boards- 6"x1"x8' & 12"x1"x8' • Powder River squeeze chute • ATV Cattle guard • Branding furnace- hot branding irons/ numbers/letters • 2 sets of 3" & 4" freeze branding irons & tank • Electric & solar fence chargers • Montana 1000 Hydraulic Post Pounder, skid steer mount • Stanley Hydraulic T post pounder, skid steer mount • Thumper Hydraulic corner post driver, loader mount • 220V Calf Hot box • Calf pullers & chains • 2 Ton CHS Livestock mineral • Salt blocks • 3-Lg. semen storage tanks • Misc. Cattle and Vet supplies • Ritchie #10 Poly Livestock waterer • 2-1500 gal poly water tanks • 2-50 gal poly water tanks • 1-150 gal. poly water tank • Misc. brass, steel & poly valves • Pump Jack on stand

Vehicles, Trailers & Equipment:

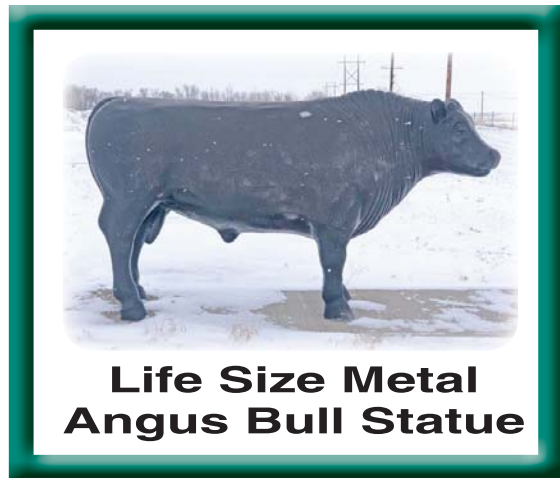
2006 Ford F150 Crew cab w/ flatbed, 93,587 miles • 1985 Ford F150 Regular cab, 8' flatbed, 96,034 miles, new engine @ 87,000 miles • 1976 Ford 2 Ton Farm Truck w/box, hoist, roll tarp, 56,277 miles, (new plugs, service & carb kit- pristine condition) • LBU Dual axle Gooseneck trailer flip down ramps and hay racks • 2020 Bobcat “Tool Cat” UTV, 403 hrs • 2020 Yamaha M700 4 wheeler, 2,000 miles • Satoh “Buck” Utility Tractor, 4WD, 3PT & PTO, Roto tiller • Menlo 2 stage Double Chute snow blower, 3 pt, 1000 PTO • MDS 10' Snow pusher (mounts on JD 380 loader) • Skid Steer mount 66" bucket w/grapple • 700 Bu double hopper drill fill, hydraulic discharge, roll tarp, mounted on 4 wheel trailer w/ adj. length hitch • Brandt 10"x60' Auger w/swing hopper • Grasshopper Lawn Mower, 60" fold up deck & bagger • Willys Jeep frame on wheels • 300 gal fuel tank • JD 1650 Chisel plow, 55' • JD 610 chisel plow, 35' • Spray Pup 3pt sprayer, 60' boom, 300 gal tank • Sakundiak auger, 8"x60', Kohler 25 HP motor • Lode King double tank seed tender, 18' • IH tandem disk, 22' • Round Bale rack, 24' • Degelman rock rake, 540 PTO drive • Degelman reel type rock picker, ground driven • Rock fork attachment for farm hand loader • Rust combine trailer • JD Green Star 2-1800 display, PIN#PCGU18B220400

Shop Equipment & Tools:

A Frame w/chain hoist • JD Air compressor, 30 gal tank, 3000watt generator • Hotsy Steam cleaner/washer • JD pressure washer • HD Shop press • Miller 200 wire feed welder • Ag Tronic PTO Drive 18,000 watt generator • 5HP gas Honda engine • Water pump w/Honda engine • Stihl gas grass & weed trimmer • Mixed lumber, boards, plywood • Mixed tin sheets • 4- pipe racks • 2 7/8" pipe & steel casing • 1"x24' sucker rod • Tires • Propane bottles • Pickup tool boxes • Misc. Tools and equipment

Household Items:

Bedroom Set-night stands/headboard & frame/dresser/chest of drawers • Bunk Beds • Crib • Curio Cabinet • Dining table-2 leaves/5 chairs • Office desk & chair • 7-bar stools • Sewing cabinet (no machine) • 2 sets of Christmas dishes • Glider Rocker • Wooden Rocking chair • Patio furniture • Picnic table



**Life Size Metal
Angus Bull Statue**

12520 104th St. NW • Ambrose, ND 58833

Phone 701-965-6234 • FAX: 701-965-5234

Not responsible for accidents. Those attending sale do so at their own risk.

WWW.HAUGLANDSACTIONAUCTION.COM

Haugland's
ACTION
AUCTION

- Butch Haugland, #211 Auctioneer
- Drew Haugland, #730 Auctioneer
- Amber Haugland, #693 Auctioneer
- Bruce Johnson, #2006 Auctioneer
- Diane Haugland, #235 Clerk